

Real-Life Impact through Virtual Support



Presented by:

- Ed Konechne, EMT – Kimball Ambulance
- John Gruber, EMS Operations Manager – Avel eCare EMS



Objectives

- Explain how Telemedicine in Motion: EMS supports South Dakota ambulance services
- Describe the impact of telemedicine in a patient encounter in a rural setting
- Highlight improvements in patient care and provider support resulting from telemedicine integration



Avel EMS



How it Works



Clinical Care and Coordination Support

- Triage
- Airway, breathing, circulation
- Respiratory, hemorrhage, medical and other cardiovascular needs
- Trauma care
- Medication decisions as included in BLS/ALS scope of practice
- Guidance on ECG placement and interpretation as available for remote reading
- Peer-peer consultation
- Procedural decisions
- Review of or advisement on diagnostic tests
- Time stamped documentation

- **Patient care coordination**
 - Poison Control consultation
 - ALS intercept and/or air medical activation
 - Deliver patient report to receiving facility with physician advisement as needed
 - Multipoint encounters
- **Additional services**
 - Interpreter services
 - Continuing education

The background is a solid dark blue. On the right side, there are large, overlapping, rounded shapes in shades of teal and red. In the top-left corner, there is a small red rectangular shape.

FROM THE FIELD

Real-world experience

Encounter



Dispatch



Scene



Patient presentation

AMBULANCE





Decision points

- resources
- transport
- telemedicine

Virtual Support

- Communication
- Collaboration
- Patient care



Avel Partnership Outcomes

Telemedicine in Motion Agency Feedback



72%

- Helps with recruitment and retention

4.4/5

- Adds to staff's capacity to care for their community

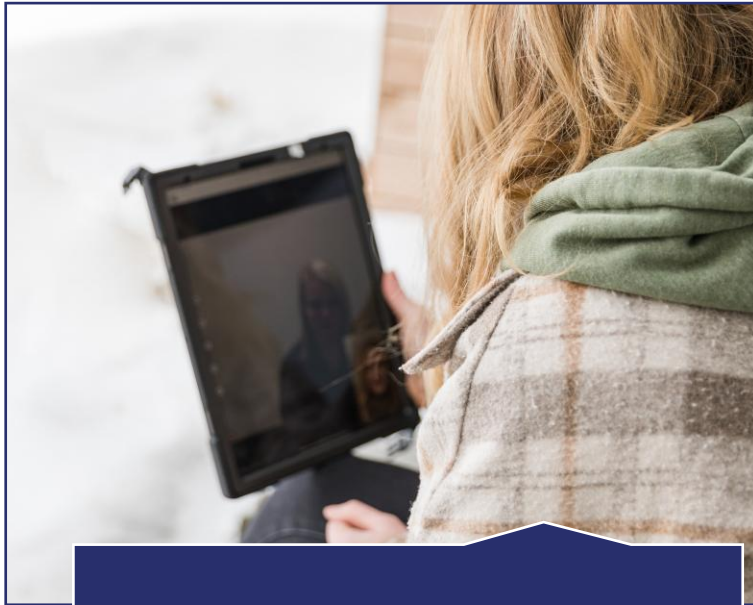
4.3/5

- Allows team more time for hands-on patient care

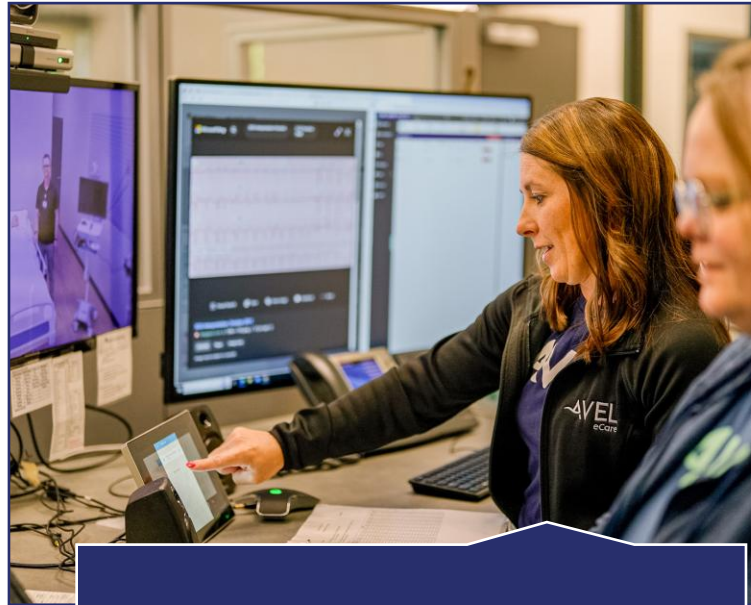
4.4/5

- Improves the quality of care in my community

Future Initiatives



Research



Monthly Training



PSAP
(911 Dispatch)

Real time support.
Real world impact.

Questions and discussion

